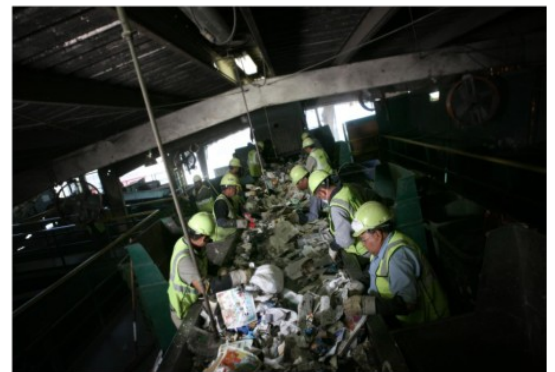


spotlight on **Waste Management Recycling Facilities**

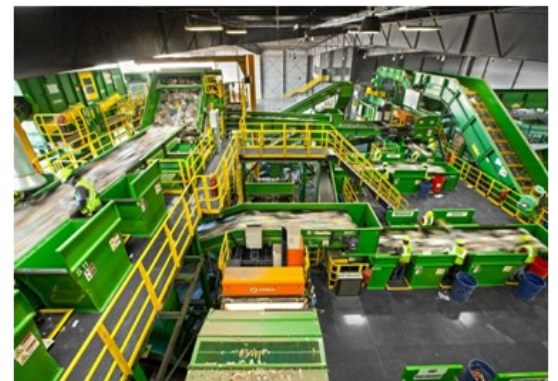
TRANSFER STATION

Waste Management's Carson Transfer Station (or T-Station) is where all the trash is hauled before it goes to the waste stream in Corona, CA. At the T-Station, we also collect, sort, and process green waste before it is sent to a green waste facility to become mulch (a form of recycling). We also have a sort line and other sorting processes where we recover as much waste as possible for recycling before it is added to our waste stream.



MATERIAL RECOVERY FACILITY (MRF) RECYCLING CENTER

Waste Management's MRF in Orange is where much of our recyclables collected in the South Bay are sent for processing. Here, everything that is placed in the recycling cart is separated and baled, before it is ultimately returned to the marketplace to become new products. At this tour, you can see how and why various types of materials can (or cannot) be recycled.



Questions?

CALL: 310-830-7100

EMAIL: askgreen@wm.com

VISIT: manhattanbeach.wm.com